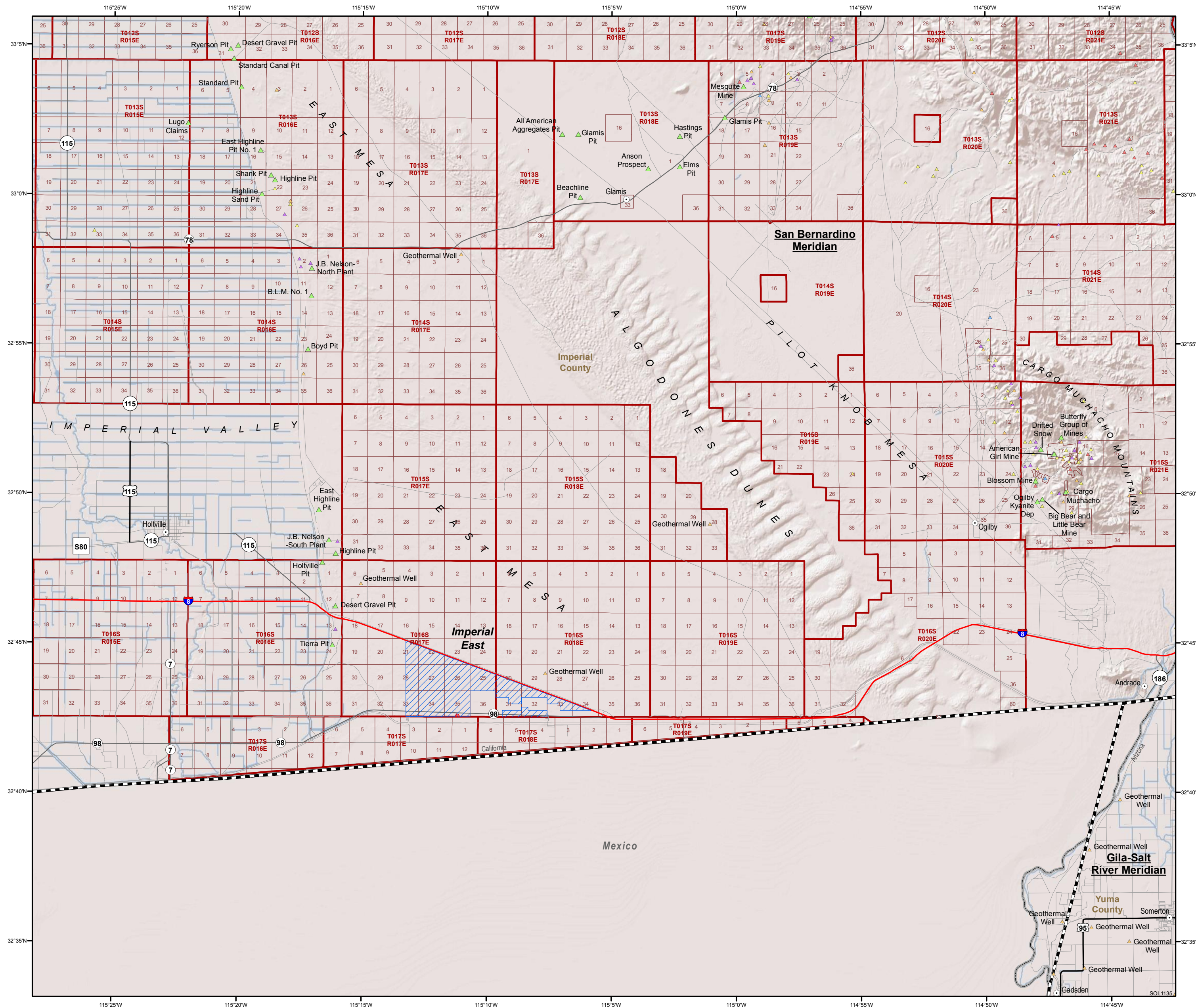


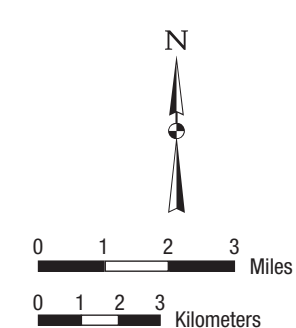
# CALIFORNIA — MAP 1

## Imperial East SEZ Land Withdrawal Area



Shaded relief map (with public land survey system grid) showing the proposed SEZ land withdrawal area in relation to past and present mineral producers, mineral occurrences, and prospects (Source: USGS Mineral Resources Data System 2011).

- Mine**
- ▲ Producer
  - ▲ Plant
  - ▲ Prospect
  - ▲ Occurrence
  - ▲ Past Producer
  - ▲ Unknown
  - Populated Place
- Interstate
  - U.S. Route
  - State Road
  - County Road
  - Local Road
  - State Line
  - County Boundary
  - Meridian Area
  - Township and Range
  - Section
  - Proposed Solar Energy Zone
  - Non-development Areas



**CALIFORNIA — MAP 1**  
**Imperial East SEZ Land Withdrawal Area**

USGS, 2011, Mineral Resource Data System: Conterminous U.S., U.S. Geological Survey Mineral Resources On-Line Spatial Data. Available at: <http://mrddata.usgs.gov/mineral-resources/mrds-us.html>. Accessed on May 6, 2011.