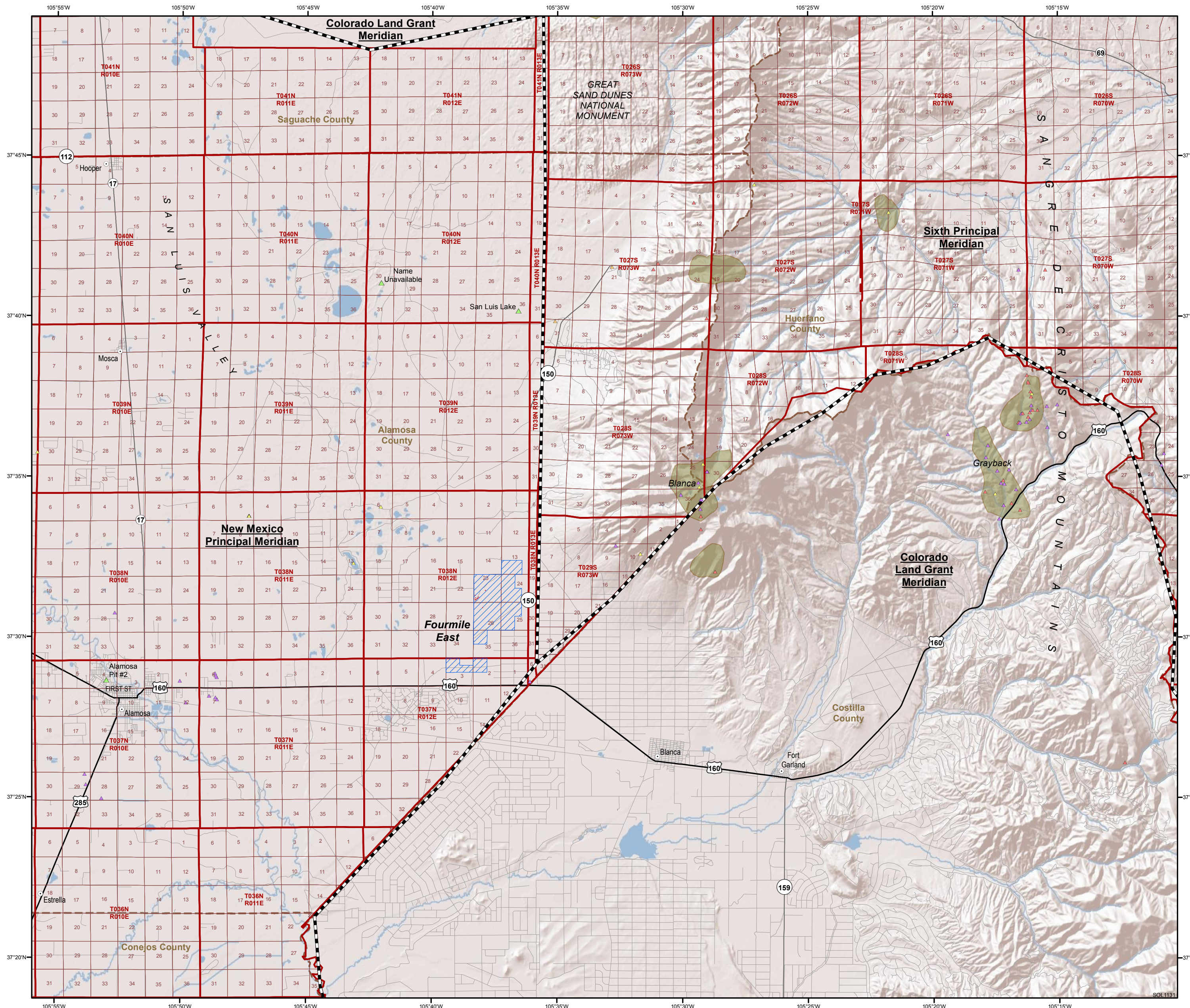


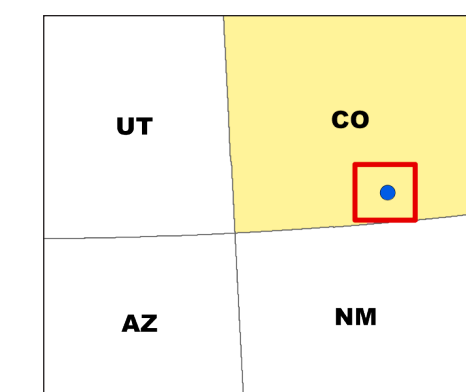
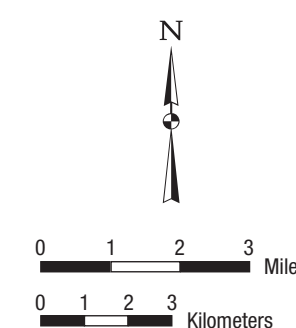
# COLORADO — MAP 3

## Fourmile East SEZ Land Withdrawal Area



Shaded relief map (with public land survey system grid) showing the proposed SEZ land withdrawal area in relation to past and present mineral producers, mineral occurrences, and prospects (Source: USGS Mineral Resources Data System 2011) and State mineralized areas (Source: Wilson 2003).

- Mine**
- ▲ Producer
  - ▲ Plant
  - ▲ Prospect
  - ▲ Occurrence
  - ▲ Past Producer
  - ▲ Unknown
  - Populated Place
  - U.S. Route
  - State Road
  - County Road
  - Local Road
  - - - County Boundary
  - ▭ Meridian Area
  - ▭ Township and Range
  - ▭ Section
  - ▭ Mineralized Area
  - ▭ Proposed Solar Energy Zone
  - ▭ Non-development Areas



**COLORADO — MAP 3**  
**Fourmile East SEZ Land Withdrawal Area**

USGS, 2011, *Mineral Resource Data System: Conterminous U.S.*, U.S. Geological Survey Mineral Resources On-Line Spatial Data. Available at: <http://mrdata.usgs.gov/mineral-resources/mrds-us.html>. Accessed on April 26, 2011.

Wilson, A.B., 2003, *Databases and Simplified Geology for Mineralized Areas, Claims, Mines, and Prospects in Colorado*, Open File Report 03-090, U.S. Geological Survey. (GIS data obtained from USGS at: <http://pubs.usgs.gov/of/2003/ofr-03-090/>).