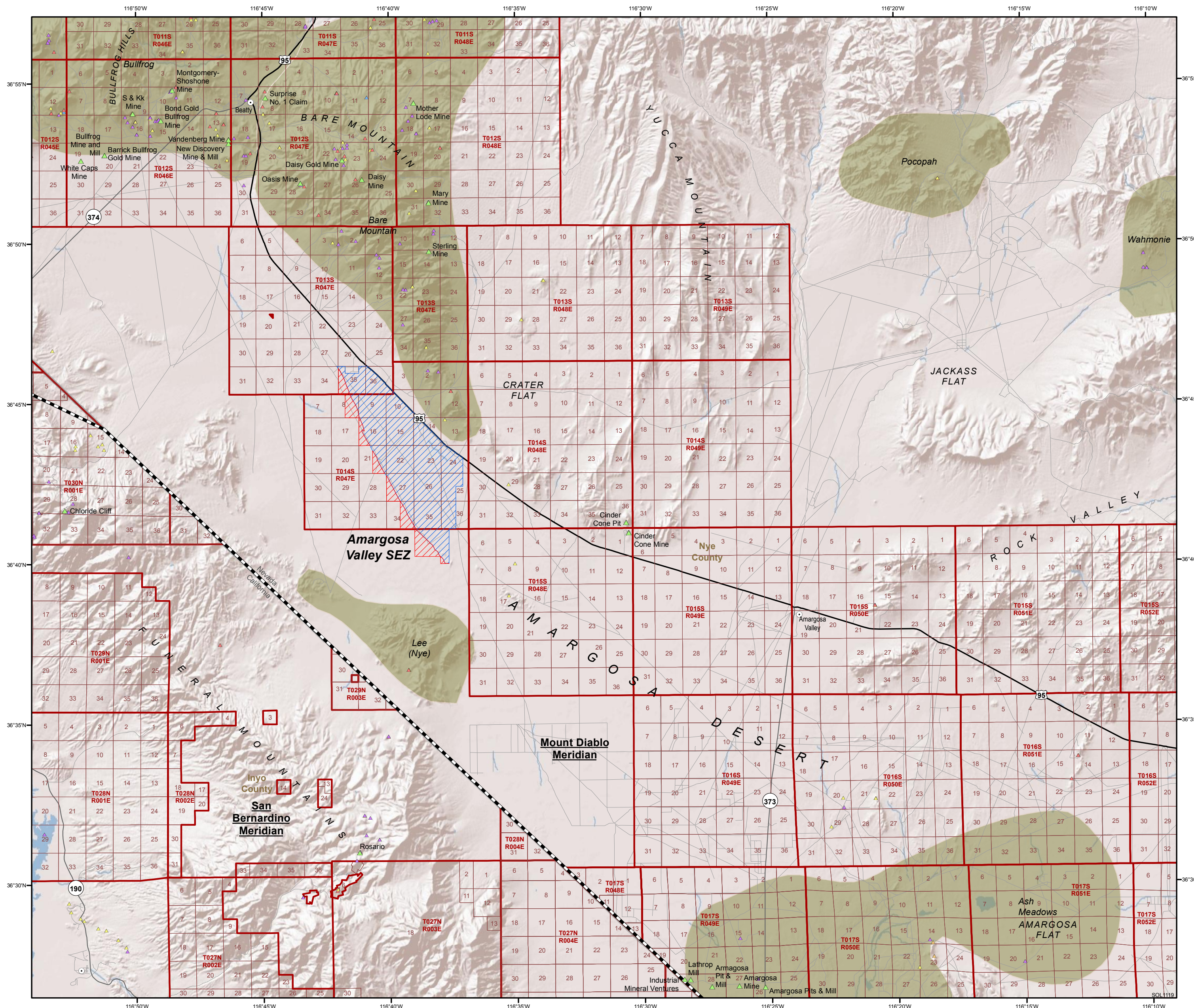


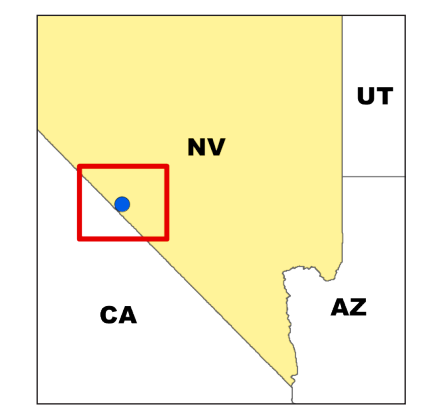
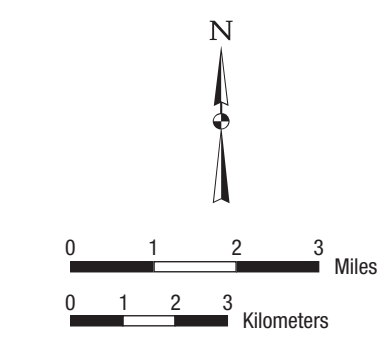
# NEVADA — MAP 1

## Amargosa Valley SEZ Land Withdrawal Area



Shaded relief map (with public land survey system grid) showing the proposed SEZ land withdrawal area in relation to past and present mineral producers, mineral occurrences, and prospects (Source: USGS Mineral Resources Data System 2011) and State mining districts (Source: Tingley 1998).

- Mine**
- ▲ Producer
  - ▲ Plant
  - ▲ Prospect
  - ▲ Occurrence
  - ▲ Past Producer
  - ▲ Unknown
  - Populated Place
  - U.S. Route
  - State Road
  - County Road
  - Local Road
  - State Line
  - County Boundary
  - Meridian Area
  - Township and Range
  - Section
  - Mining District
  - Proposed Solar Energy Zone
  - Non-development Areas



Shaded Relief Copyright: © 2009 ESRI  
amargosa

Tingley, J.V., 1998, *Mining Districts of Nevada - Second Edition*, Nevada Bureau of Mines and Geology, Report 47 - Plate 1 (GIS data obtained from the Nevada Bureau of Mines and Geology).  
USGS, 2011, *Mineral Resource Data System: Conterminous U.S.*, U.S. Geological Survey Mineral Resources On-Line Spatial Data. Available at: <http://mrdata.usgs.gov/mineral-resources/mrds-us.html>. Accessed on Feb. 7, 2011.

NEVADA — MAP 1  
Amargosa Valley SEZ Land Withdrawal Area