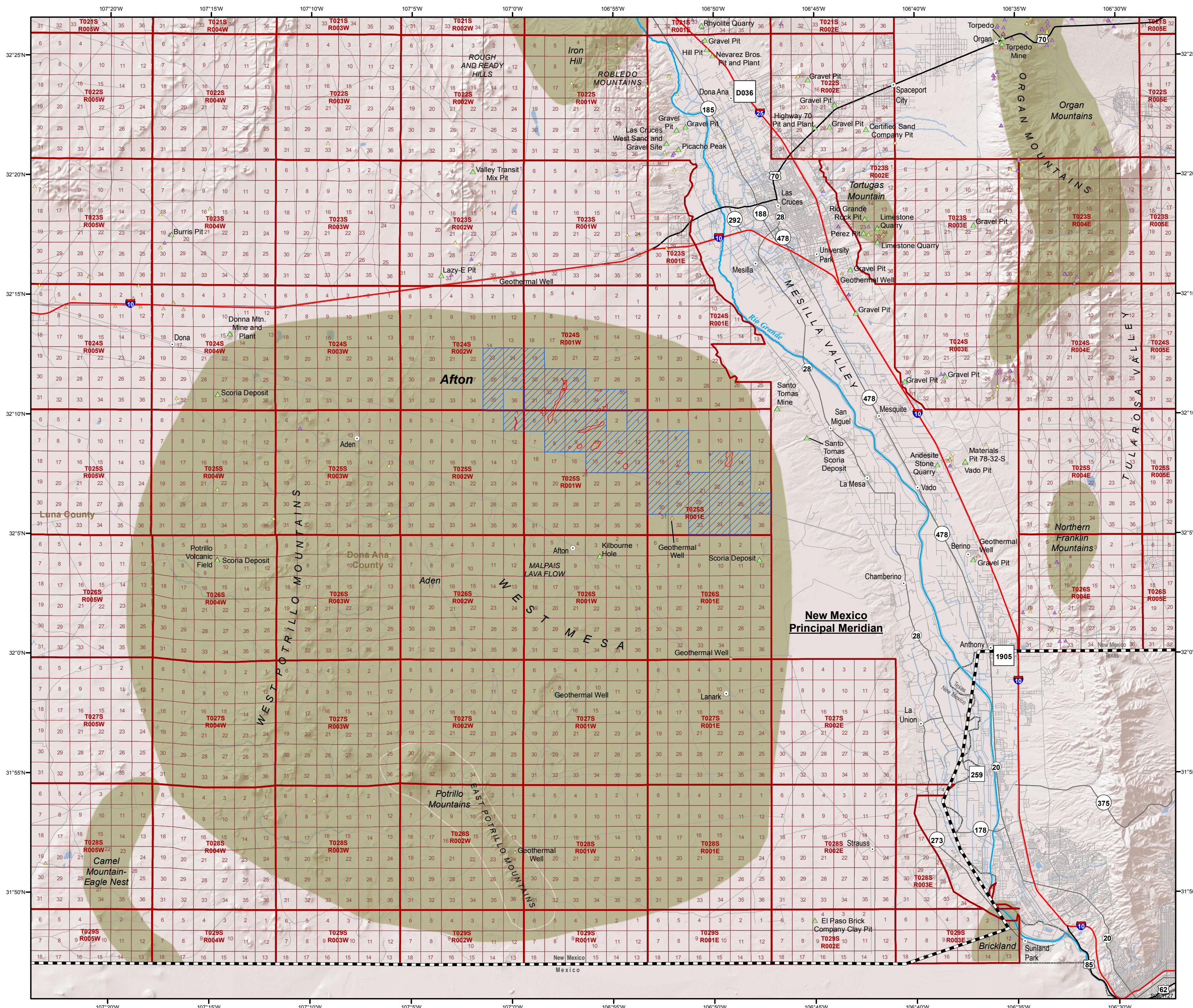


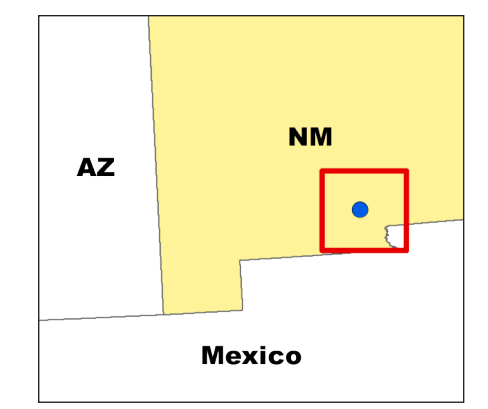
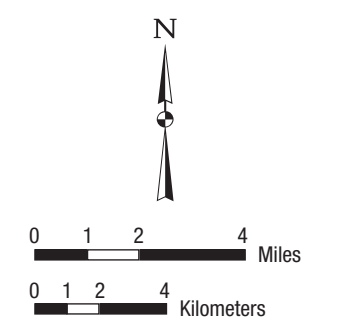
# NEW MEXICO — MAP 1

## Afton SEZ Land Withdrawal Area



Shaded relief map (with public land survey system grid) showing the proposed SEZ land withdrawal area in relation to past and present mineral producers, mineral occurrences, and prospects (Source: USGS Mineral Resources Data System 2011) and State mining districts (Source: McLemore et al. 2005).

- Mine**
- ▲ Producer
  - ▲ Plant
  - ▲ Prospect
  - ▲ Occurrence
  - ▲ Past Producer
  - ▲ Unknown
  - ⊙ Populated Place
  - River
  - Interstate
  - U.S. Route
  - State Road
  - County Road
  - Local Road
  - State Line
  - County Boundary
  - Meridian Area
  - Township and Range
  - Section
  - Mining District
  - Proposed Solar Energy Zone
  - Non-development Areas



NEW MEXICO — MAP 1  
Afton SEZ Land Withdrawal Area

McLemore, V.T., et al., 2005, *Mining Districts in New Mexico*, New Mexico Institute of Mining and Technology, Open File Report 494, New Mexico Bureau of Geology and Mineral Resources, Nov.  
USGS, 2011, *Mineral Resource Data System: Conterminous U.S.*, U.S. Geological Survey Mineral Resources On-Line Spatial Data. Available at: <http://mrd.data.usgs.gov/mineral-resources/mrds-us.html>. Accessed on April 4, 2011.