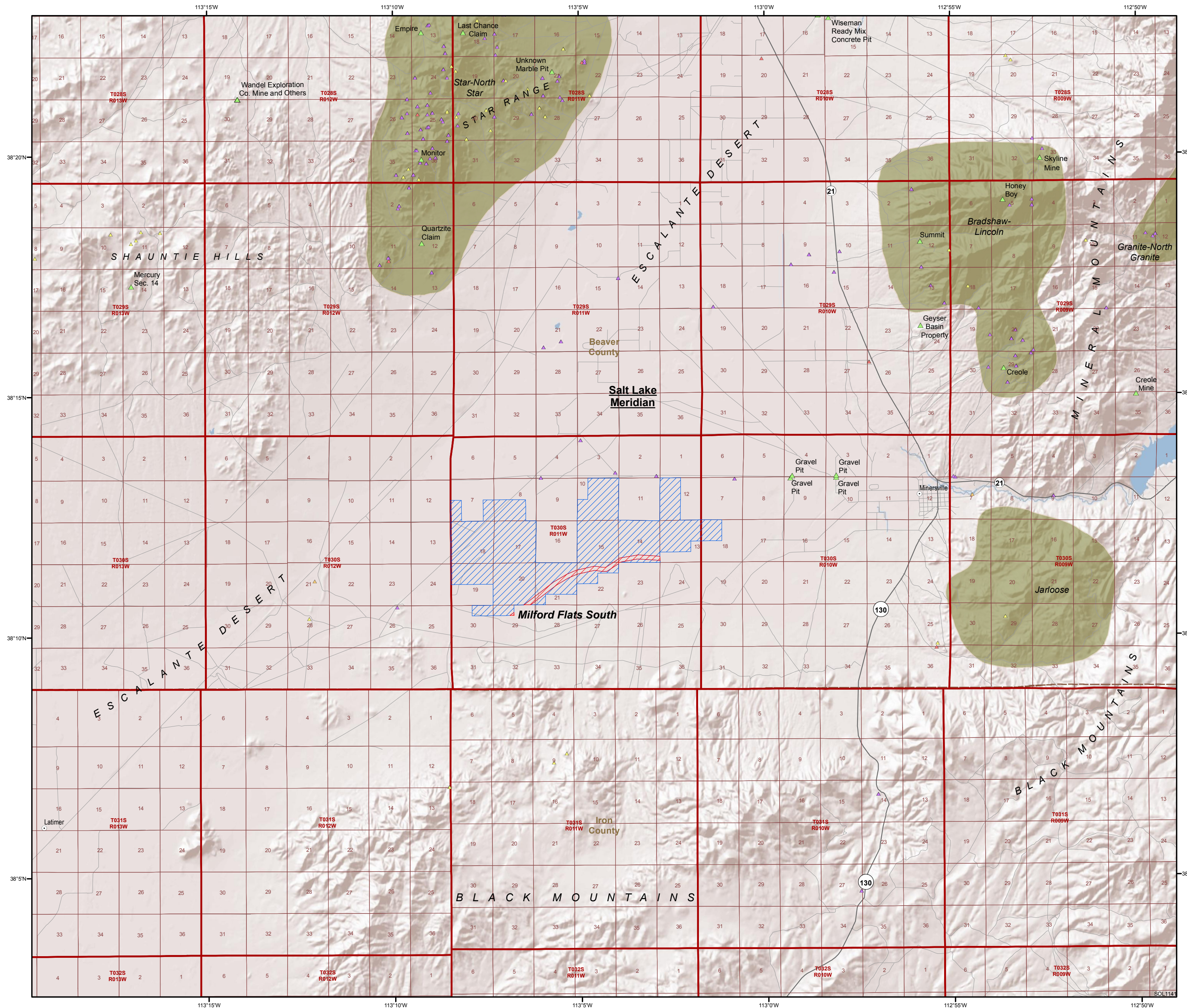


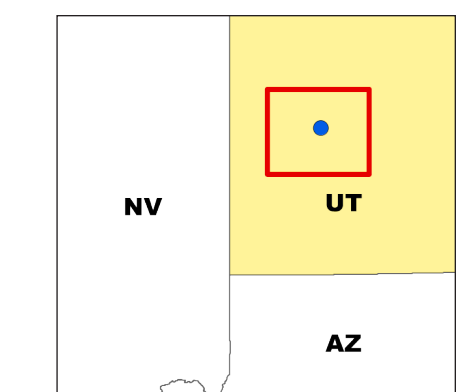
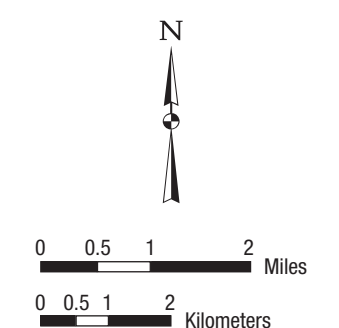
# UTAH — MAP 2

## Milford Flats South SEZ Land Withdrawal Area



Shaded relief map (with public land survey system grid) showing the proposed SEZ land withdrawal area in relation to past and present mineral producers, mineral occurrences, and prospects (Source: USGS Mineral Resources Data System 2011) and State mining districts (Source: Doelling and Tooker 1983).

- Mine**
- ▲ Producer
  - ▲ Plant
  - ▲ Prospect
  - ▲ Occurrence
  - ▲ Past Producer
  - ▲ Unknown
  - Populated Place
  - State Road
  - County Road
  - Local Road
  - - - County Boundary
  - ▭ Township and Range
  - ▭ Section
  - Mining District
  - ▨ Proposed Solar Energy Zone
  - ▨ Non-development Areas



UTAH — MAP 2  
Milford Flats South SEZ Land Withdrawal Area

Doelling, H.H. and E.W. Tooker, 1983, Map 70, *Utah Mining District Areas and Principle Metal Occurrences* (Scale 1:750,000), Utah Geological and Mineral Survey and U.S. Geological Survey, Aug. (GIS data obtained from the Utah GIS Portal, May 3, 2011).  
USGS, 2011, *Mineral Resource Data System: Conterminous U.S.*, U.S. Geological Survey Mineral Resources On-Line Spatial Data. Available at: <http://mrd.data.usgs.gov/mineral-resources/mrds-us.html>. Accessed on April 4, 2011.