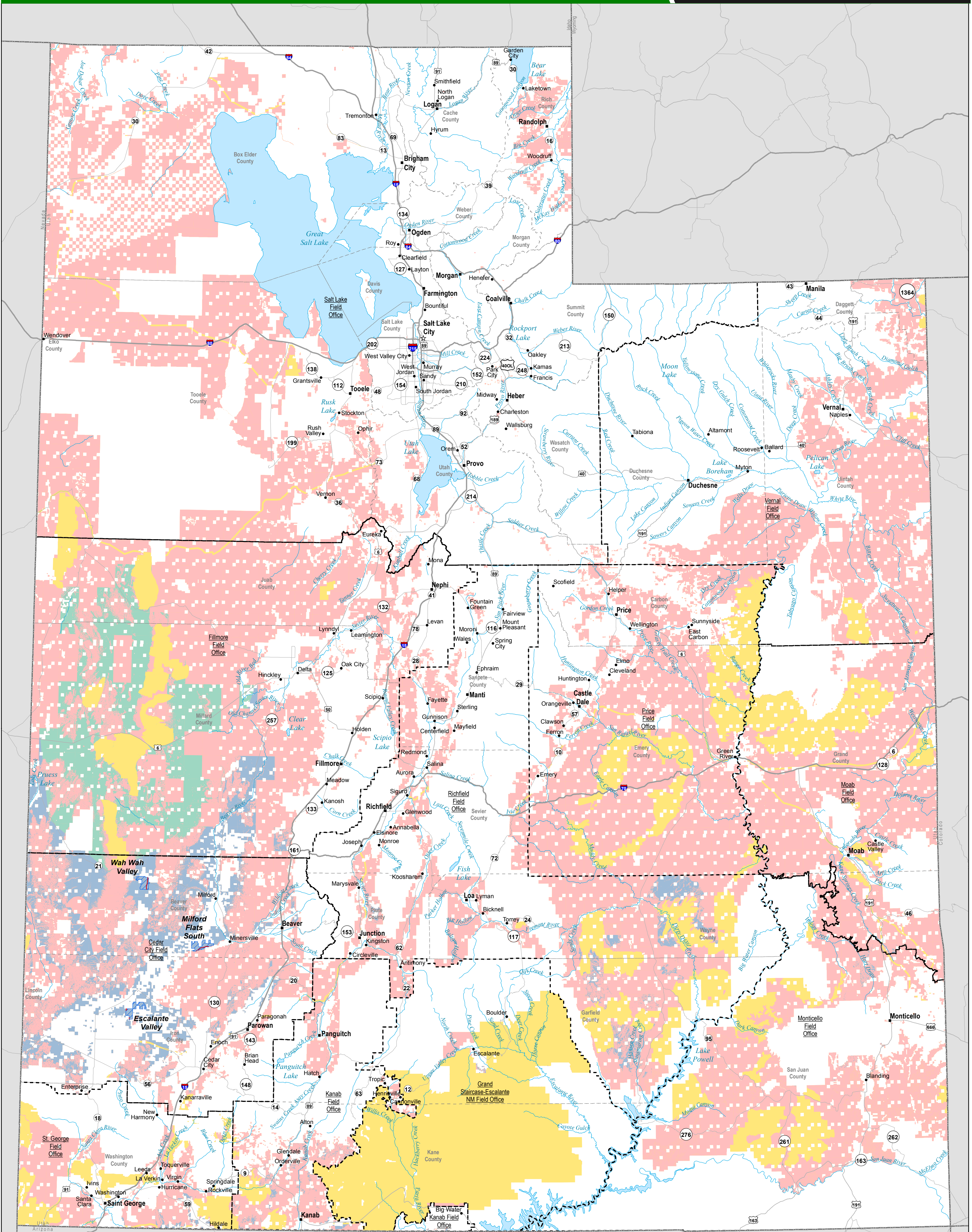


Land Use Allocations in Utah as a Result of the Solar PEIS Record of Decision

Data from Solar PEIS, July 2012



Property of the U.S. Departments of Energy and the Interior. Used in preparation of their Final Programmatic Environmental Impact Statement for Solar Energy Development in Six Southwestern States



- County Boundary
- BLM Administrative Division
- BLM-Administered Lands not Available for Solar Development
- Exclusion Areas Identified through the Solar PEIS Record of Decision (16,300,000 Acres)
- Variance Areas Identified through the Solar PEIS Record of Decision (1,800,000 Acres)
- Lands Available for Application Affected by UTTR (See Note)
- Solar Energy Zone (18,658 Acres)**
 - Developable Areas within SEZs
 - Non-Development Areas within SEZs

Individual SEZ Acreages	
SEZ	Developable Acres
Escalante Valley	6,533
Milford Flats South	6,252
Wah Wah Valley	5,873



ARGONNE NATIONAL LABORATORY