



BOARD OF SUPERVISORS COUNTY OF INYO

P. O. BOX N • INDEPENDENCE, CALIFORNIA 93526
TELEPHONE (760) 878-0373 • FAX (760) 878-2241
e-mail: pgunsolley@inyocounty.us

MEMBERS OF THE BOARD
LINDA ARCULARIUS
SUSAN CASH
BEVERLY BROWN
MARTY FORTNEY
RICHARD CERVANTES

KEVIN D. CARUNCHIO
Clerk of the Board

PATRICIA GUNSOLLEY
Assistant Clerk of the Board

July 28, 2009

Solar Energy PEIS
Argonne National Laboratory
9700 S. Cass Avenue – EVS/900
Argonne, IL 60439

RE: PEIS Solar Energy Scoping Process

Gentlemen:

The County supports BLM's efforts to more rapidly and effectively move California and other western states toward renewable energy resources and respectfully wishes to make clear its desire to have local interests represented by being integrally involved not only in the planning and environmental review stages involved in the solar process, but in all phases – from inception to completion.

Inyo County requests to participate as a cooperating agency with the BLM in the PEIS process for solar energy development in California. Specifically, Inyo County requests coordination with BLM on this important issue, as provided under FLPMA and NEPA, in order that the County may take an active role with BLM in investigating and shaping future solar development within California.

Specifically, in reviewing the proposed renewable energy study areas, we notice both that there are no areas identified in Inyo County, and that there are areas immediately to the east of the County, in Nevada, that are identified for review. These areas (in western Nevada) end abruptly at the County (and California) border. There are extensive BLM lands in Inyo County that are contiguous with the identified study areas in Nevada and that possess the same excellent renewable energy potential (see two attached maps). Further, in Inyo County, BLM lands surround private, undeveloped lands in the Charleston View area (south and west of Pahrump, Nevada) that would be excellent land on which to locate solar production as well as support operations for solar development both in Inyo County and Nevada.

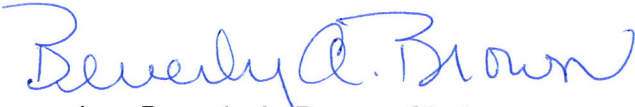
We request that the BLM review the identified study areas with a view toward expanding them across political boundaries to similar lands in Inyo County. We believe this is important for two reasons. First, it increases the area and effectiveness of the identified study areas. The appropriateness of BLM lands for renewable energy development does not depend on state, county, or other political boundaries. Additionally, including BLM lands that are contiguous with private undeveloped land opens the possibility for

Solar Energy PEIS
Argonne National Laboratory
July 29, 2009
Page TWO

private/public energy partnerships. Certainly, it would increase the likelihood that these private lands could be effectively used for energy generation and, combined with BLM lands, for energy transmission. Second, such energy development could lead to increased economic development and increased tax support for the citizens of any jurisdiction in which the development occurs. Excluding appropriate contiguous lands from study areas because those lands lie across political or BLM organizational boundaries removes an economic opportunity for similarly situated lands and jurisdictions, at no real savings to the study process. This seems neither logical nor fair.

For these reasons, Inyo County requests that BLM expand and modify its renewable energy study areas to include contiguous and appropriate BLM land in Inyo County.

Sincerely,



Supervisor Beverly A. Brown, Chairperson
Inyo County Board of Supervisors

Atch: Map

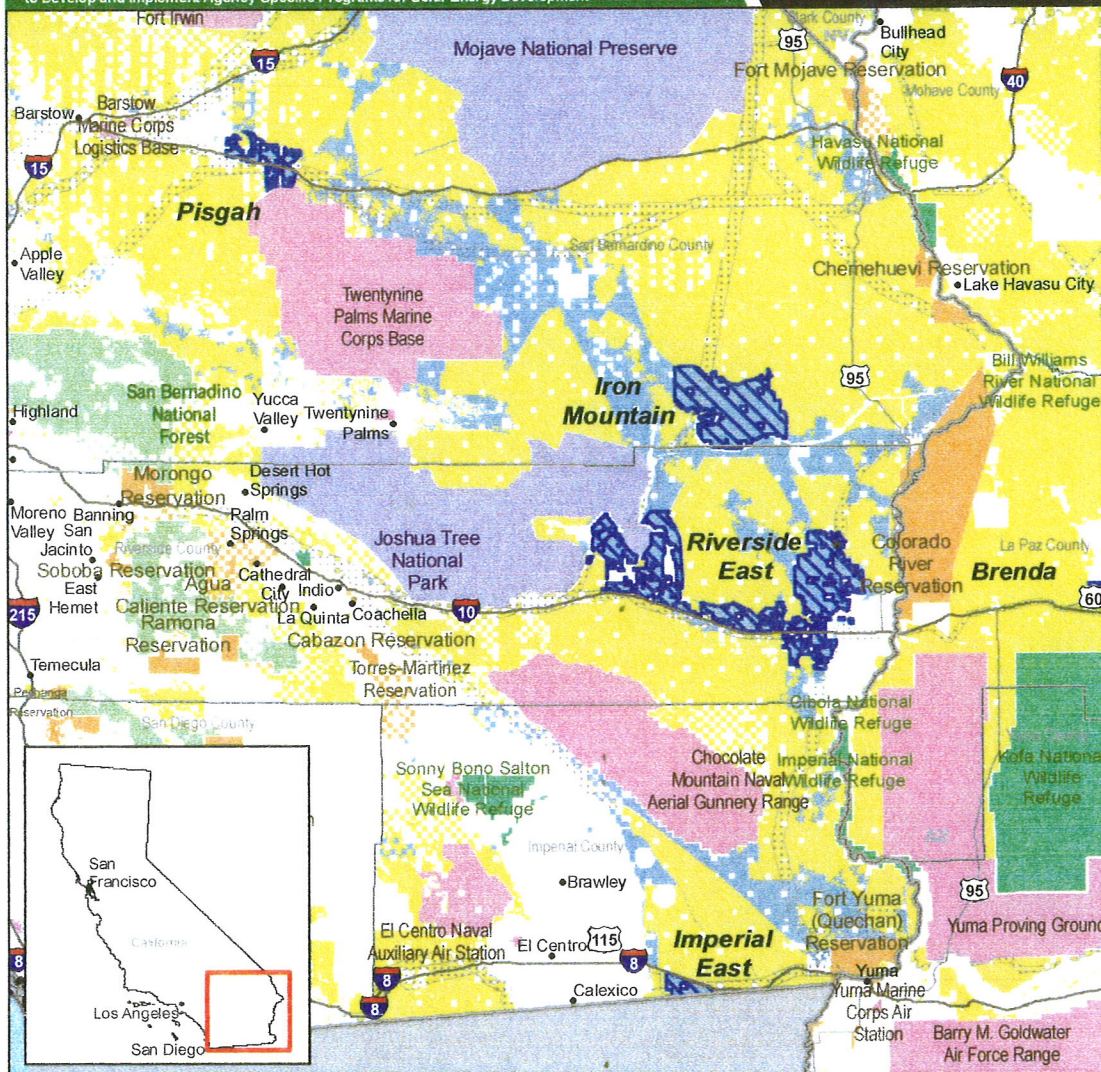
cc: Greg Miller, Renewable Energy Program Mgr., BLM California Desert District
California Energy Commission, Clare Laufenberg Gallardo
Board of Supervisors, Inyo County
Kevin Carunchio, County CAO
Randy Keller, Deputy County Counsel
Doug Wilson, Willdan Associates

Solar Energy Study Areas in California

Map Prepared July 21, 2009

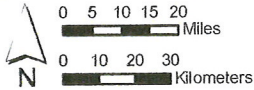


Property of the U.S. Departments of Energy and the Interior
for Use in Preparation of their Programmatic Environmental Impact Statement
to Develop and Implement Agency-Specific Programs for Solar Energy Development



Surface Management Agency As of 3/26/2009	
Tribal Lands	DOD
BLM	DOE
BOR	OTHER
FWS	USFS
NPS	

- State Line
- County Boundary
- Solar Energy Study Area (As of 6/5/2009)
- Existing Designated Corridor (See Note 2) (As of 7/21/2009)
- BLM Lands Being Analyzed for Solar Development in PEIS (As of 6/5/2009)



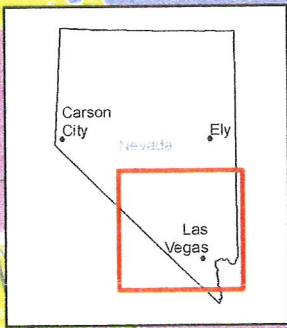
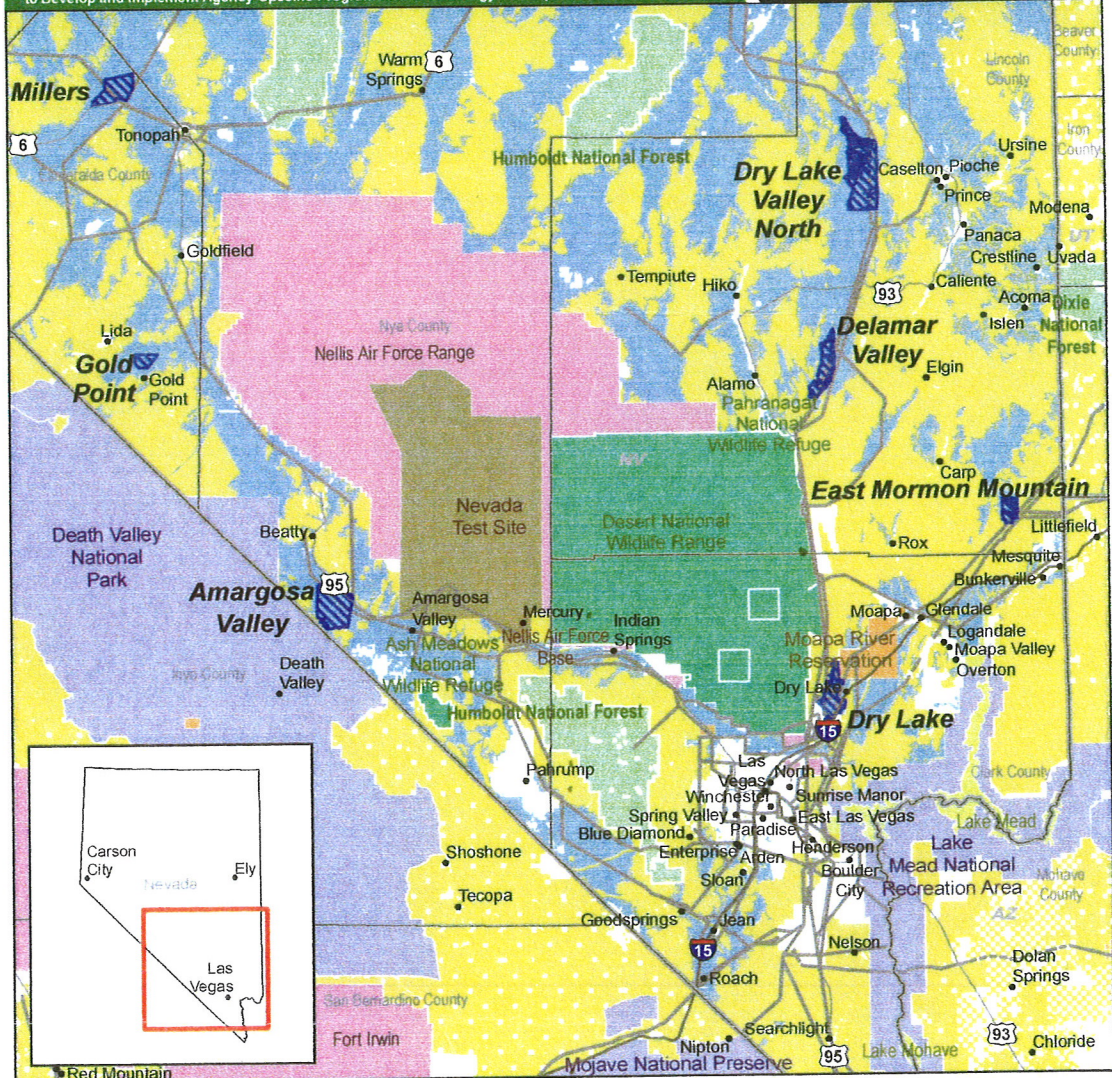
NOTE 1: Revisions to the National Landscape Conservation System included in Public Law 111-11 are not yet reflected in this map.
NOTE 2: Designated Corridors are developed for federal land use planning purposes only and are not applicable to state-owned or privately-owned land. SO.L139

Solar Energy Study Areas in Nevada

Map Prepared June 5, 2009

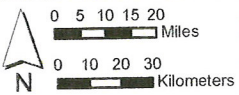


Property of the U.S. Departments of Energy and the Interior for Use in Preparation of their Programmatic Environmental Impact Statement to Develop and Implement Agency-Specific Programs for Solar Energy Development



Surface Management Agency
As of 3/26/2009

- State Line
- County Boundary
- Solar Energy Study Area (As of 6/5/2009)
- Existing Designated Corridor (See Note 2) (As of 6/5/2009)
- BLM Lands Being Analyzed for Solar Development in PEIS (As of 6/5/2009)



NOTE 1: Revisions to the National Landscape Conservation System included in Public Law 111-11 are not yet reflected in this map.
NOTE 2: Designated Corridors are developed for federal land use planning purposes only and are not applicable to state-owned or privately-owned land. SOL140

RESOLUTION NO. 2009- 29

RESOLUTION OF THE BOARD OF SUPERVISORS OF THE COUNTY OF INYO, STATE OF CALIFORNIA, REGARDING COUNTY OF INYO AND BUREAU OF LAND MANAGEMENT (BLM) COORDINATION PROCESS CONCERNING THE SOLAR PEIS TO DEVELOP AND IMPLEMENT AGENCY SPECIFIC PROGRAMS FOR SOLAR ENERGY DEVELOPMENT AND FOR THE PROCESSING OF EXISTING AND FUTURE SOLAR APPLICATIONS

WHEREAS, the Bureau of Land Management (BLM), under the Department of the Interior, and the Department of Energy (DOE) are completing a Programmatic Environmental Impact Statement (PEIS) to analyze, develop, and implement agency-specific programs for solar energy development; and

WHEREAS, the PEIS includes maps depicting solar energy study areas to be analyzed, but none such study areas are located in Inyo County; and

WHEREAS, Inyo County has abundant open space and sunlight and has an interest in being included in, and considered for, analysis for future solar development in California; and

WHEREAS, the BLM is required by law and regulation to coordinate its land use plans with local government agencies, as specified in the Federal Land Policy and Management Act (FLPMA) (42 U.S.C. 1712; 43 C.F.R. 1610.3); and

WHEREAS, these laws and regulations recognize that the primary responsibility for land use planning has traditionally been with the local government, and preserve the local government's role in federal land use decisions; and

WHEREAS, such coordination is a collaborative planning process as defined and mandated in the Inyo County General Plan and must involve government-to-government coordination between the staff of Inyo County and the BLM; and

WHEREAS, by invoking these rights of coordination this Board has determined that Inyo County should be included as an active partner in the Solar PEIS analysis for solar development in California.

NOW, THEREFORE, BE IT HEREBY RESOLVED, that the following legally binding Inyo County General Plan policies are relevant to and govern the coordination process:

- A collaborative planning process is a system where all parties involved come together to gain a better understanding of the environment in which they make and implement plans, to gain a full understanding of each others concerns, and to work together as equals to solve issues of common concern.
- The County shall review the plans of land management agencies, districts, utilities, and Native American tribes for consistency with the General Plan and related planning documents and provide comments and alternative solutions where inconsistencies exist.

Management of federal lands shall include:

- Interconnection or coordination of state, federal, and local facilities and programs when possible.

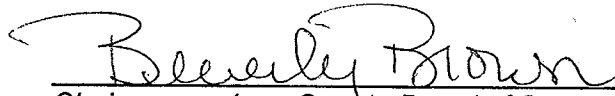
The County shall:

- Work with other government land management agencies to preserve and protect biological resources while maintaining the ability to utilize the natural resources in the County.

BE IT FURTHER RESOLVED, that this Board of Supervisors directs the Inyo County Planning Department to coordinate with the BLM to ensure that all Inyo County General Plan policies and guidelines are adhered to in the Solar PEIS process and to report to this Board the results of coordination so that the Board may determine consistency of the Solar PEIS process with the Inyo County General Plan.

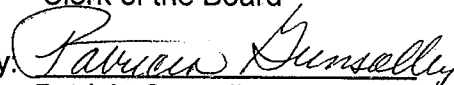
PASSED AND ADOPTED THIS 28TH DAY OF JULY, 2009 by the following vote:

AYES: Supervisors Arcularius, Cash, Brown, Fortney and Cervantes
NOES: -0-
ABSTAIN: -0-
ABSENT: -0-



Chairperson, Inyo County Board of Supervisors

Attest: Kevin D. Carunchio
Clerk of the Board

By: 
Patricia Gunsolley, Assistant